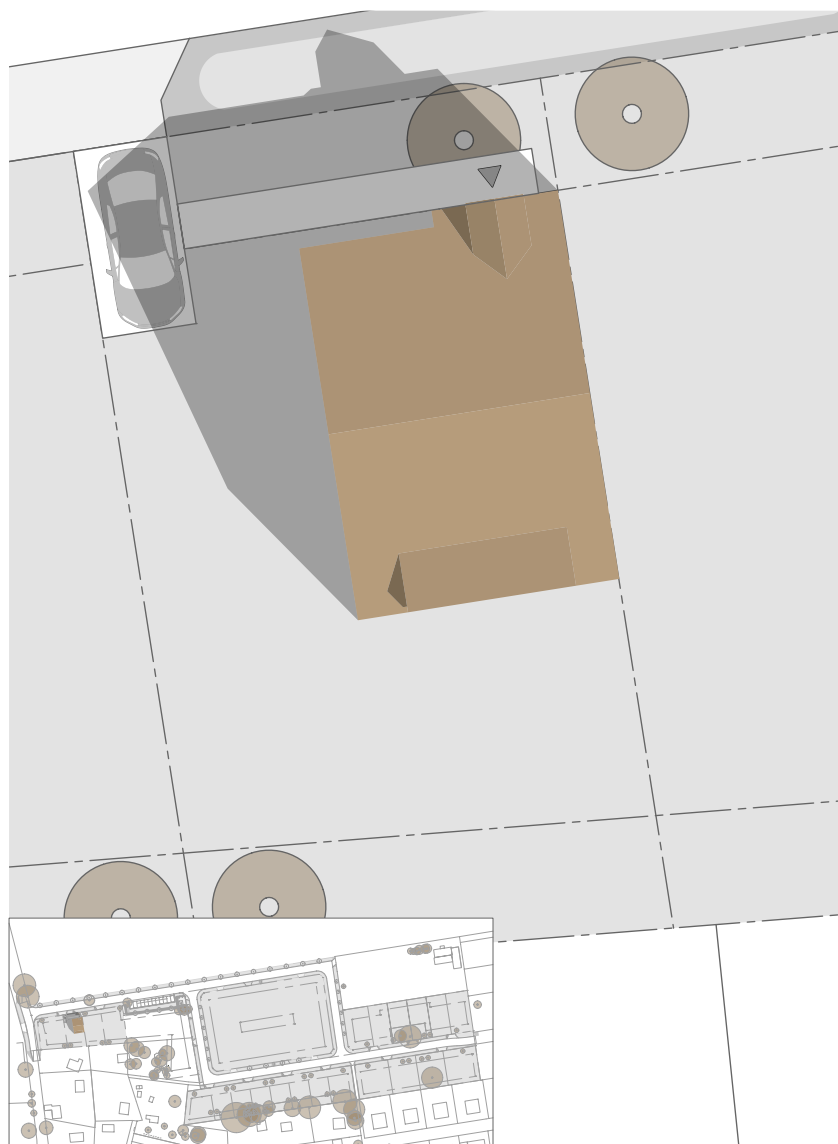


Lageplan



babel
tree
twins

WA3.2

AN DER ALTEN EICHE

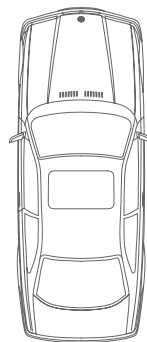
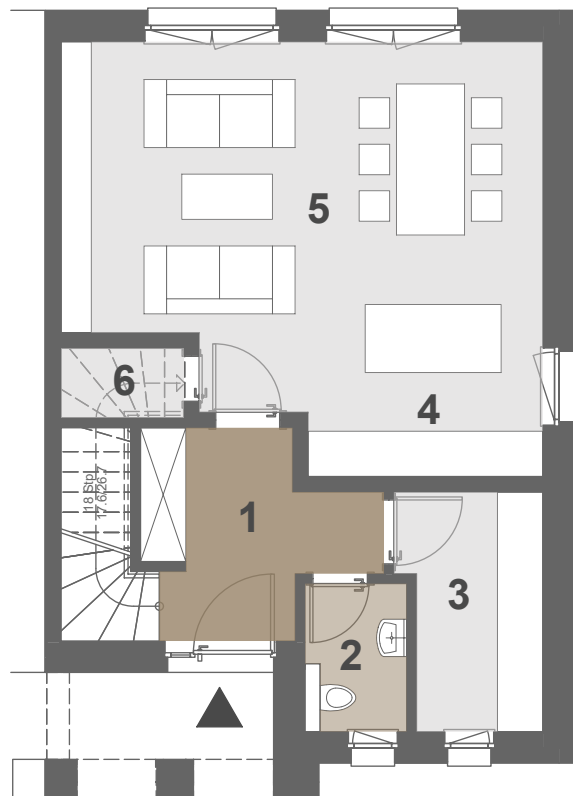


Erdgeschoss

babel
tree
twins

WA3.2

AN DER ALTEN EICHE



1. Diele	6,70
2. WC	2,64
3. Hausanschlussraum	5,62
4. Küche	7,87
5. Wohnen	24,06
6. Abstellraum	1,49

GESAMTFLÄCHE: 48,38

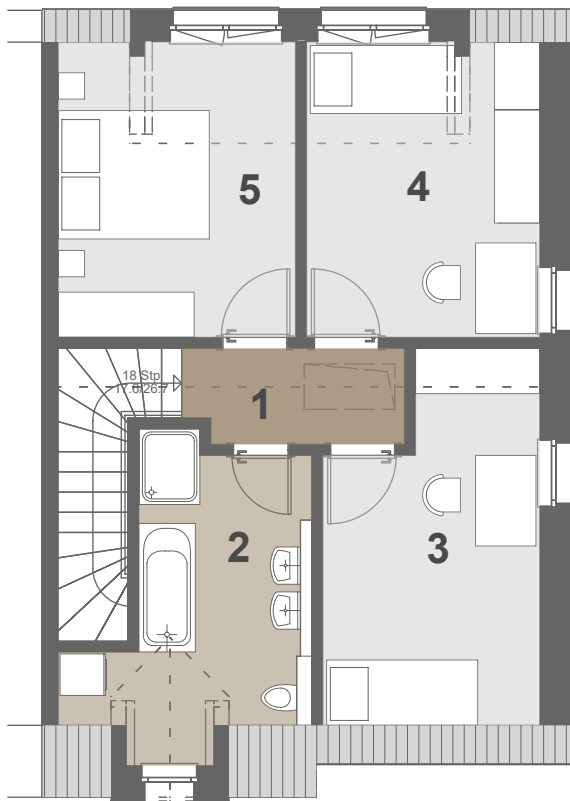


1. Obergeschoss

**babel
tree
twins**

WA3.2

AN DER ALTEN EICHE



1. Flur	3,61
2. Bad	10,14
3. Zimmer 1	12,20
4. Zimmer 2	11,80
5. Zimmer 3	12,01

GESAMTFLÄCHE: 49,75

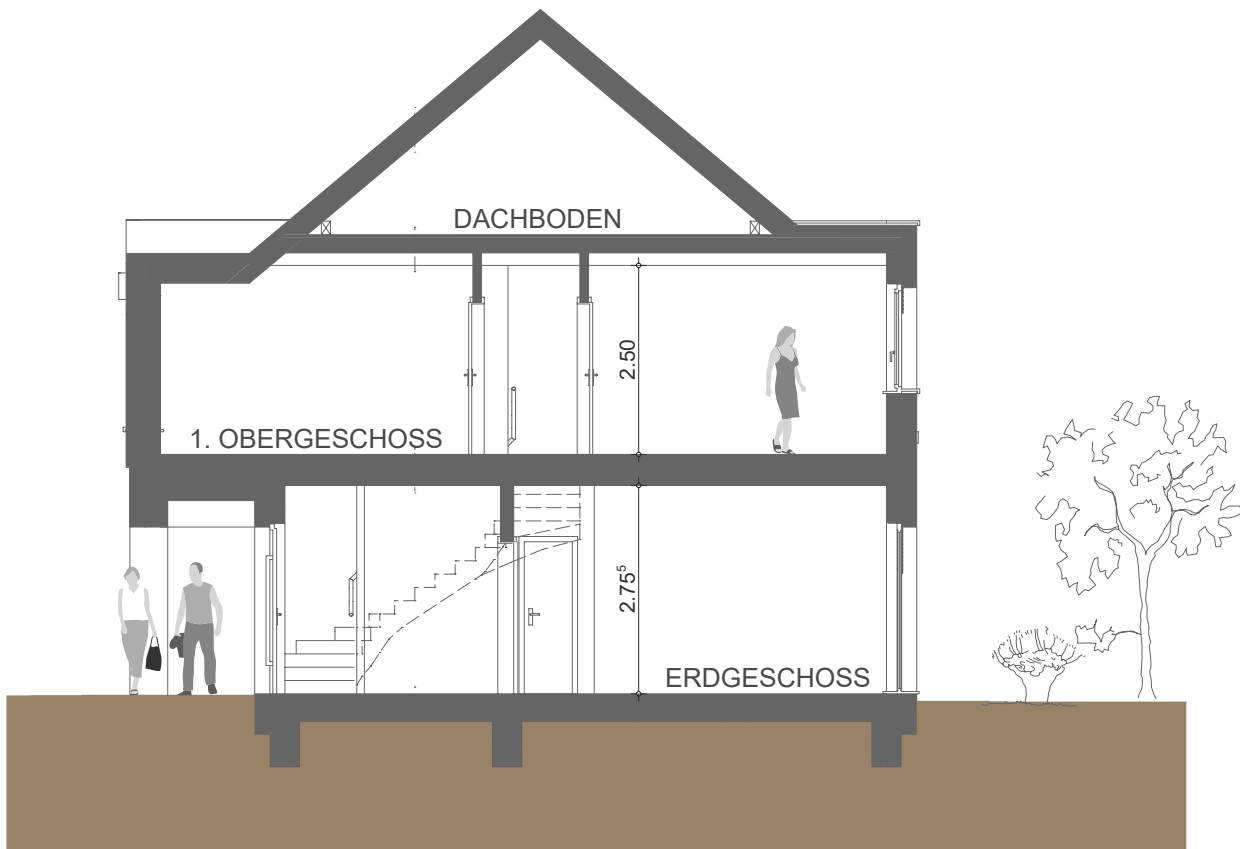


Schnitt A-A

babel
tree
twins

WA3.2

AN DER ALTEN EICHE



Straßenansicht

babel
tree
twins

WA3.2

AN DER ALTEN EICHE



Gartenansicht

babel
tree
twins

WA3.2

AN DER ALTEN EICHE

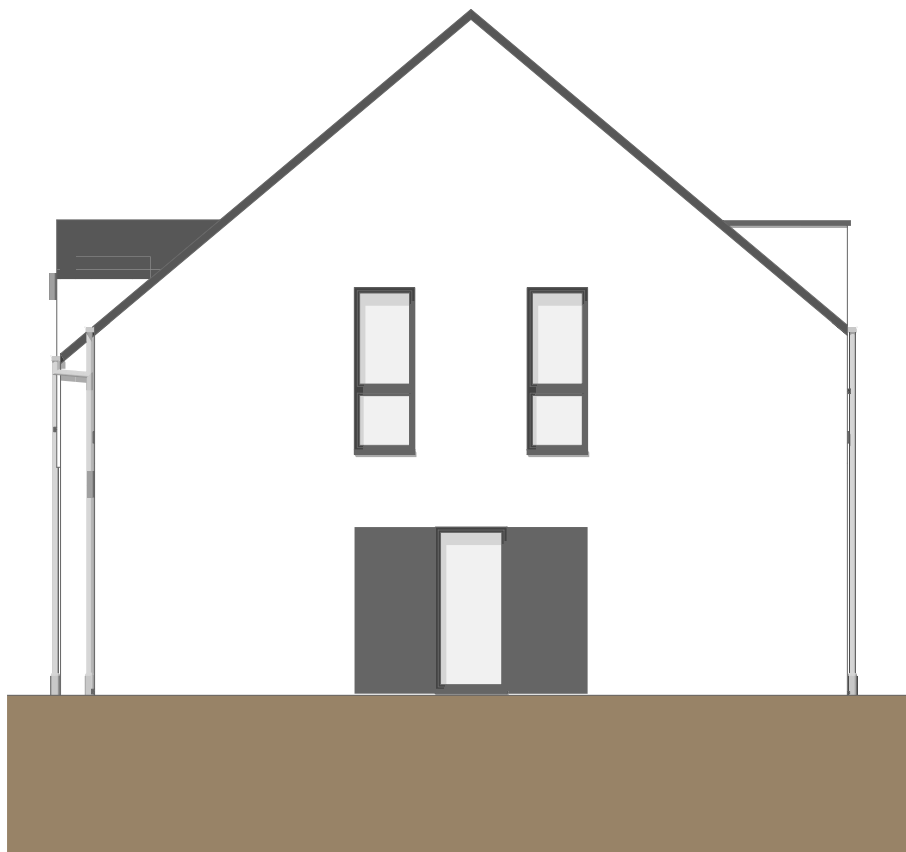


Ansicht rechts

babel
tree
twins

WA3.2

AN DER ALTEN EICHE



Visualisierung

babel
tree
twins

WA3.2/3

AN DER ALTEN EICHE

