

Visualisierung

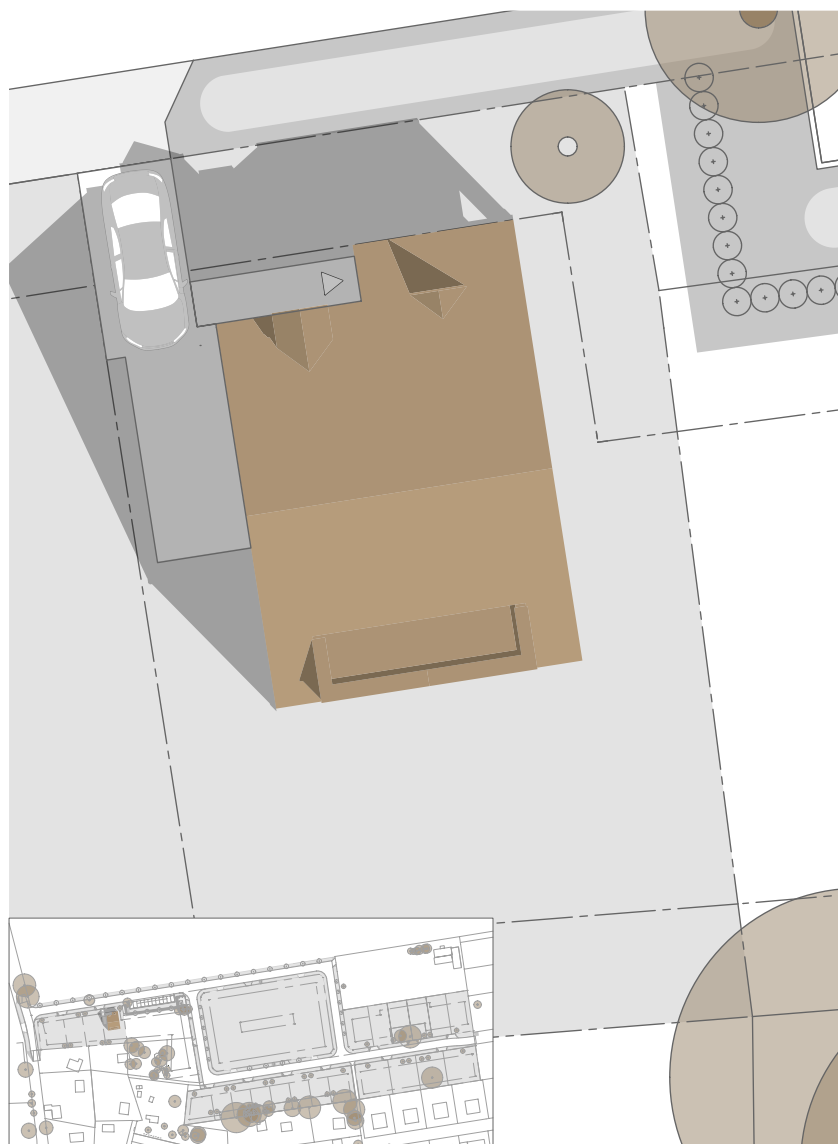
babel
tree
solo

WA3.4



AN DER ALTEN EICHE

Lageplan



babel
tree
solo

WA3.4

AN DER ALTEN EICHE

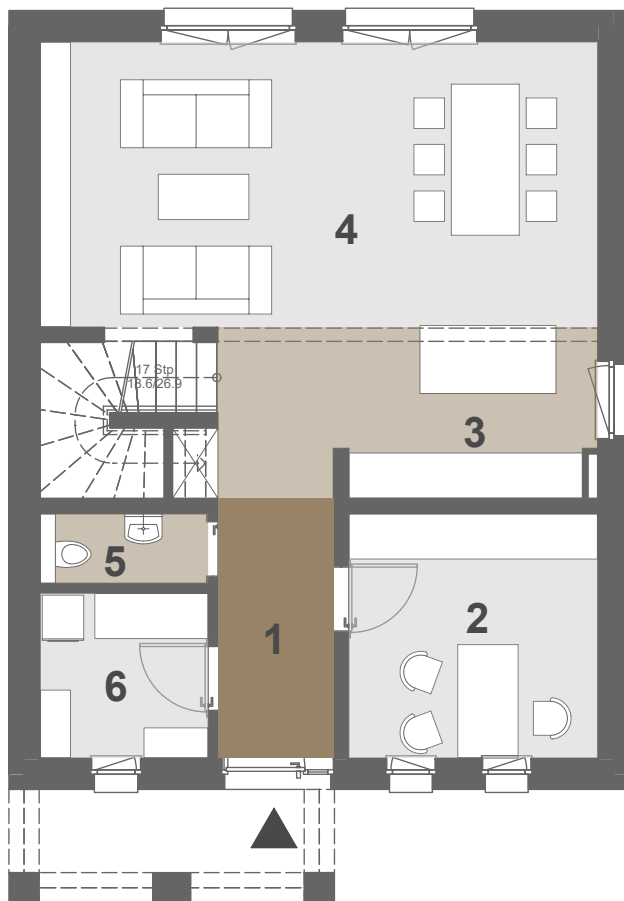


Erdgeschoss

babel
tree
solo

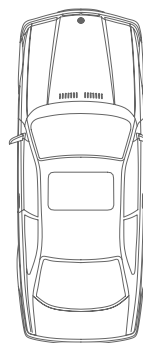
WA3.4

AN DER ALTEN EICHE



1. Diele	5,24
2. Büro	10,63
3. Küche	11,27
4. Wohnen	27,78
5. WC	2,04
6. Hausanschlussraum	4,84

GESAMTFLÄCHE: 61,80

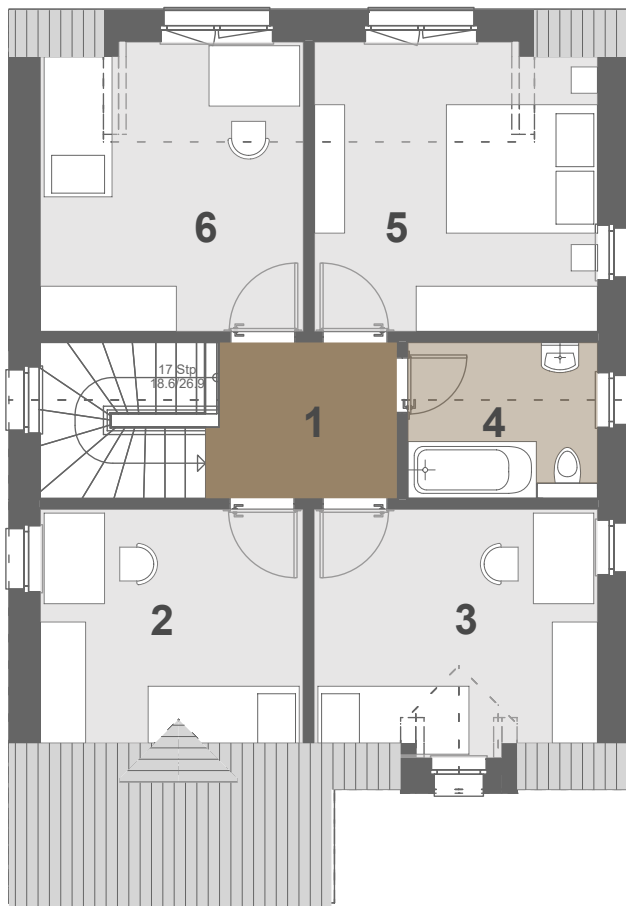


1. Obergeschoss

**babel
tree
solo**

WA3.4

AN DER ALTEN EICHE



1. Flur	4,99
2. Zimmer 1	10,73
3. Zimmer 2	11,76
4. Bad	5,17
5. Zimmer 3	14,11
6. Zimmer 4	13,10

GESAMTFLÄCHE: 59,87

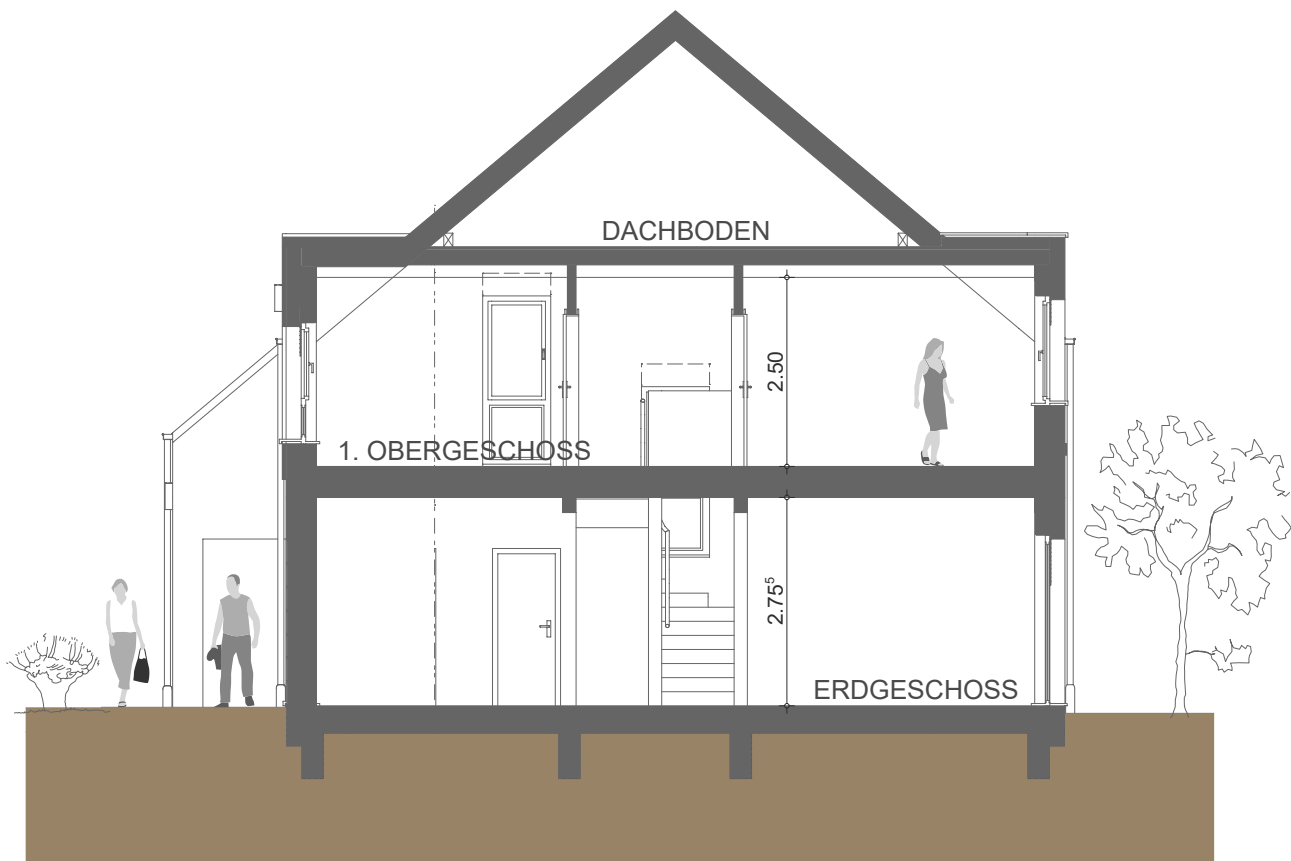


Schnitt A-A

babel
tree
solo

WA3.4

AN DER ALTEN EICHE



Straßenansicht

babel
tree
solo

WA3.4

AN DER ALTEN EICHE

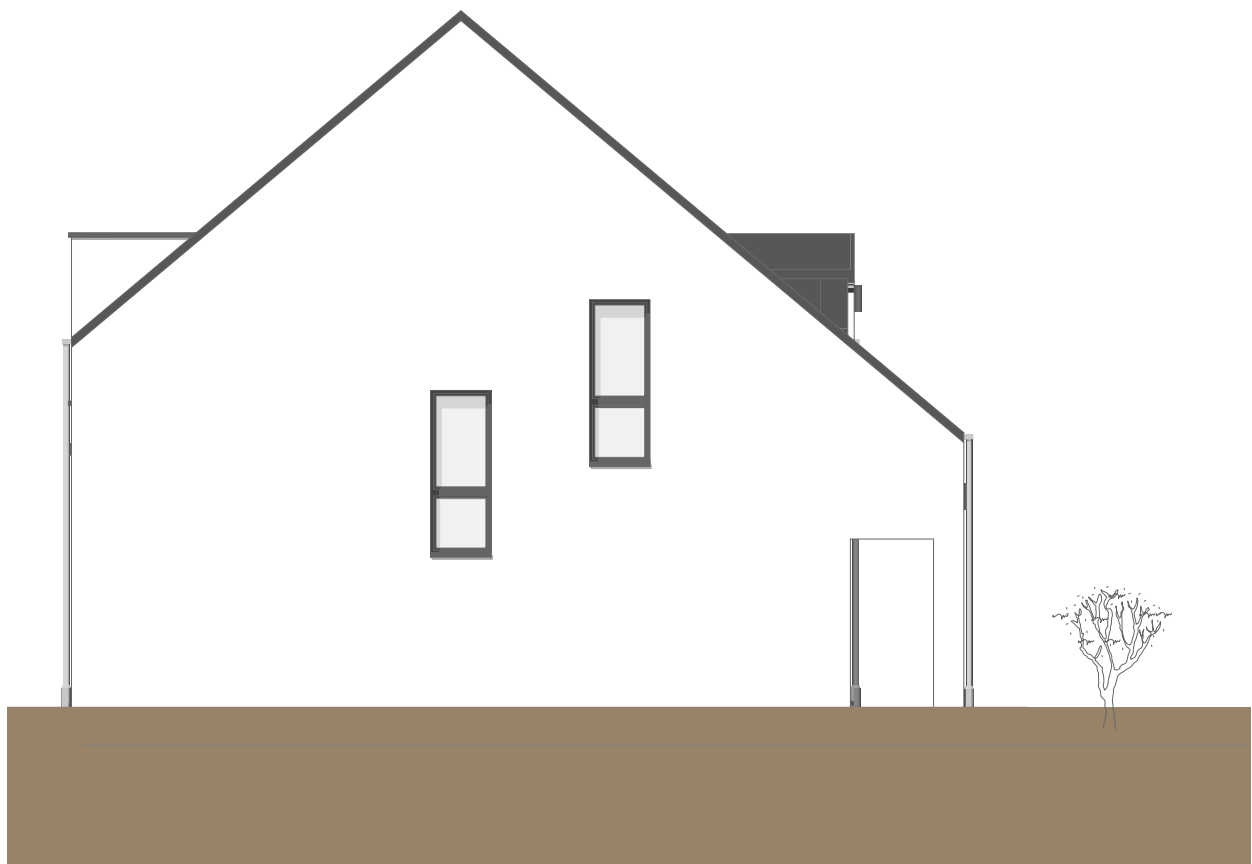


Ansicht links

babel
tree
solo

WA3.4

AN DER ALTEN EICHE

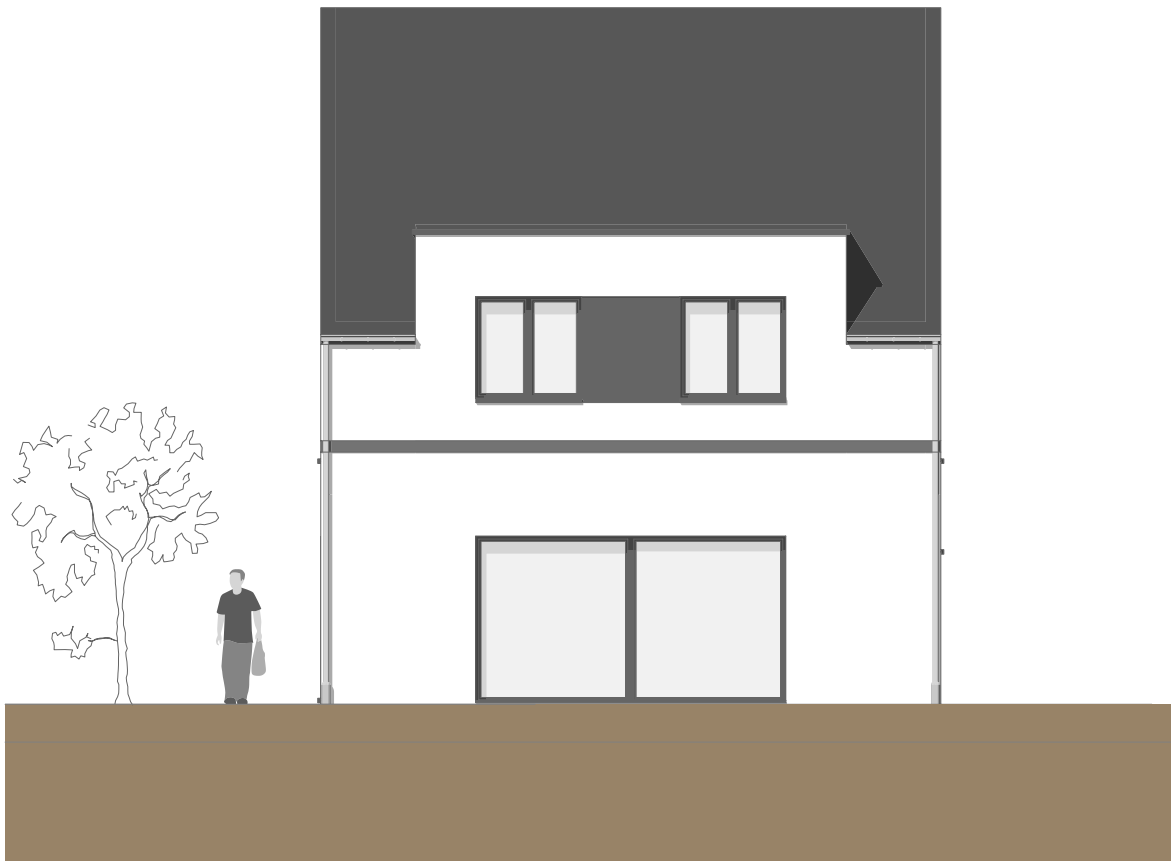


Gartenansicht

babel
tree
solo

WA3.4

AN DER ALTEN EICHE



Ansicht rechts

babel
tree
solo

WA3.4

AN DER ALTEN EICHE

