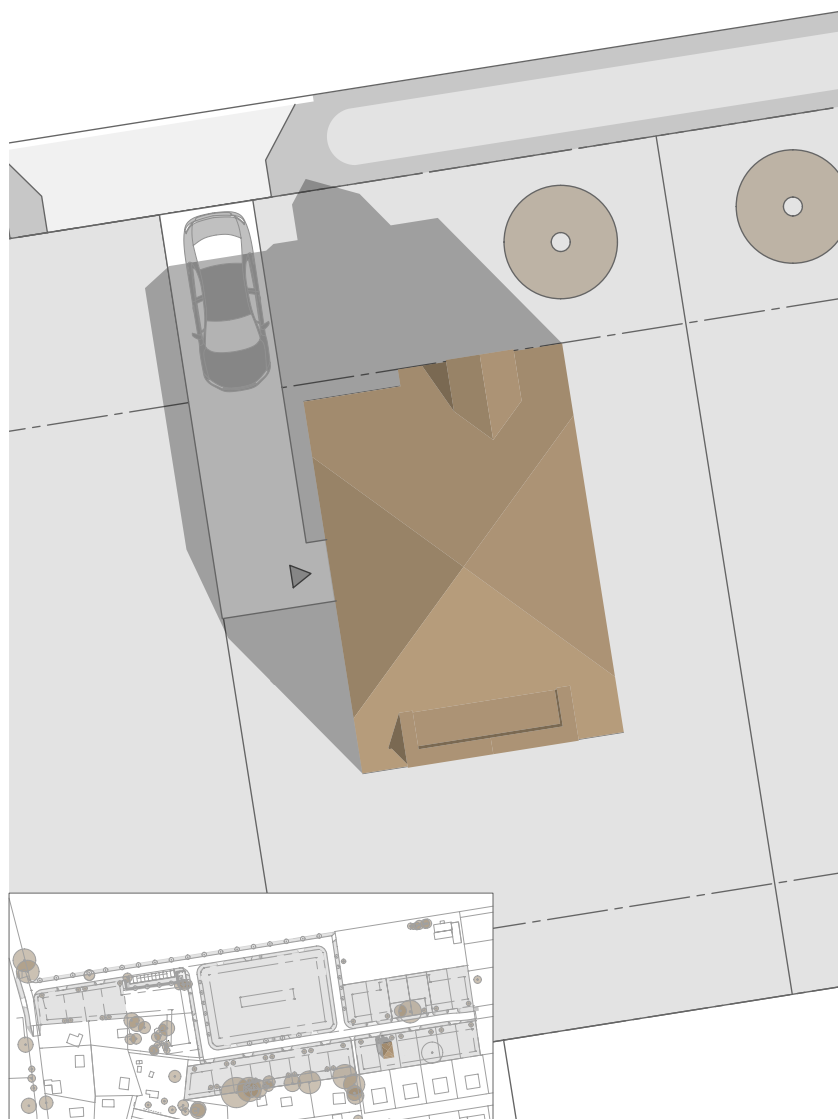


Lageplan



babel
tree
solo

WA5.2

AN DER ALTEN EICHE

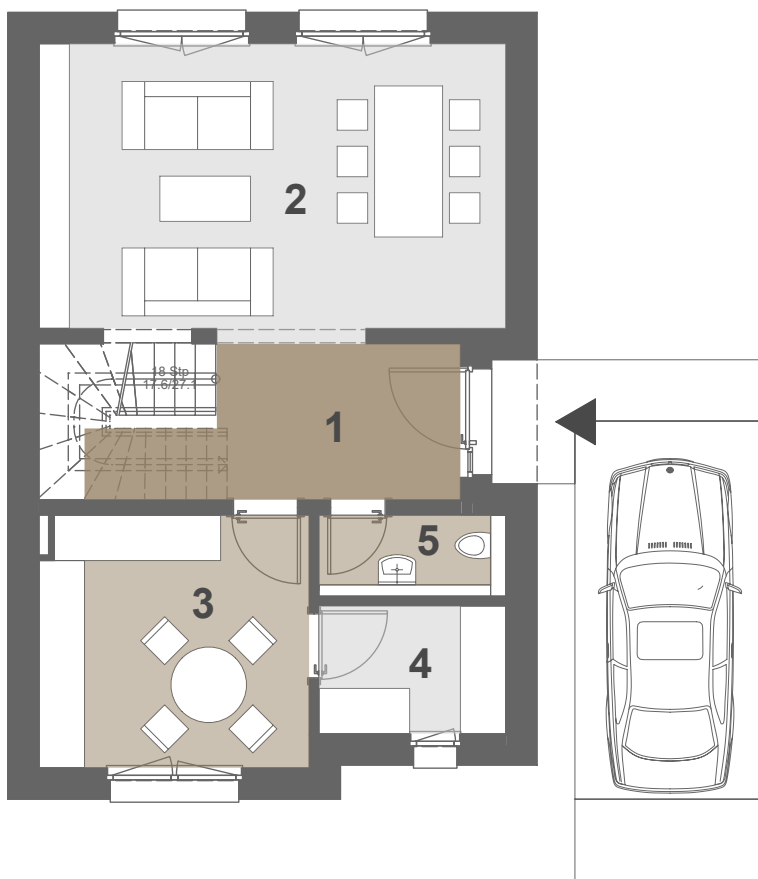


Erdgeschoss

babel
tree
solo

WA5.2

AN DER ALTEN EICHE



| | |
|----------------------|-------|
| 1. Diele | 8,28 |
| 2. Wohnen | 23,63 |
| 3. Küche | 11,80 |
| 4. Hausanschlussraum | 4,17 |
| 5. WC | 2,64 |

GESAMTFLÄCHE: 50,54

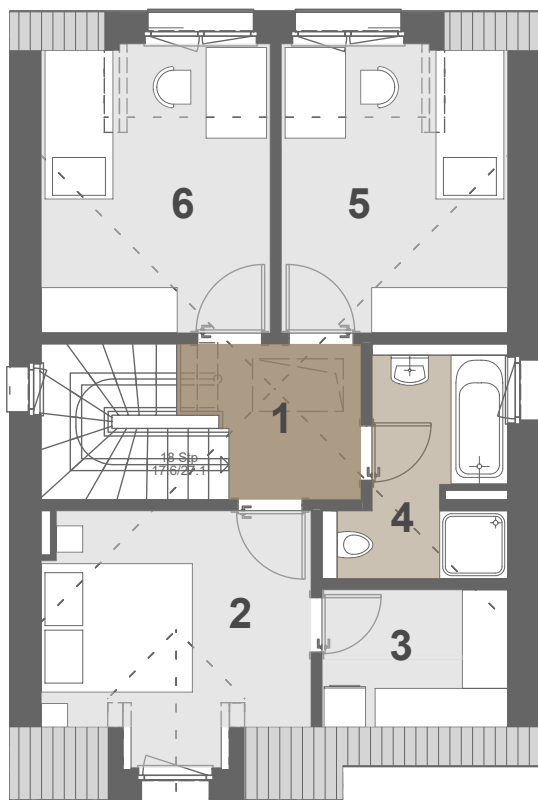


1. Obergeschoss

**babel
tree
solo**

WA5.2

AN DER ALTEN EICHE



| | |
|-------------|-------|
| 1. Flur | 4,27 |
| 2. Zimmer 1 | 11,92 |
| 3. Ankleide | 4,68 |
| 4. Bad | 5,86 |
| 5. Zimmer 2 | 11,46 |
| 6. Zimmer 3 | 11,59 |

GESAMTFLÄCHE: 49,77

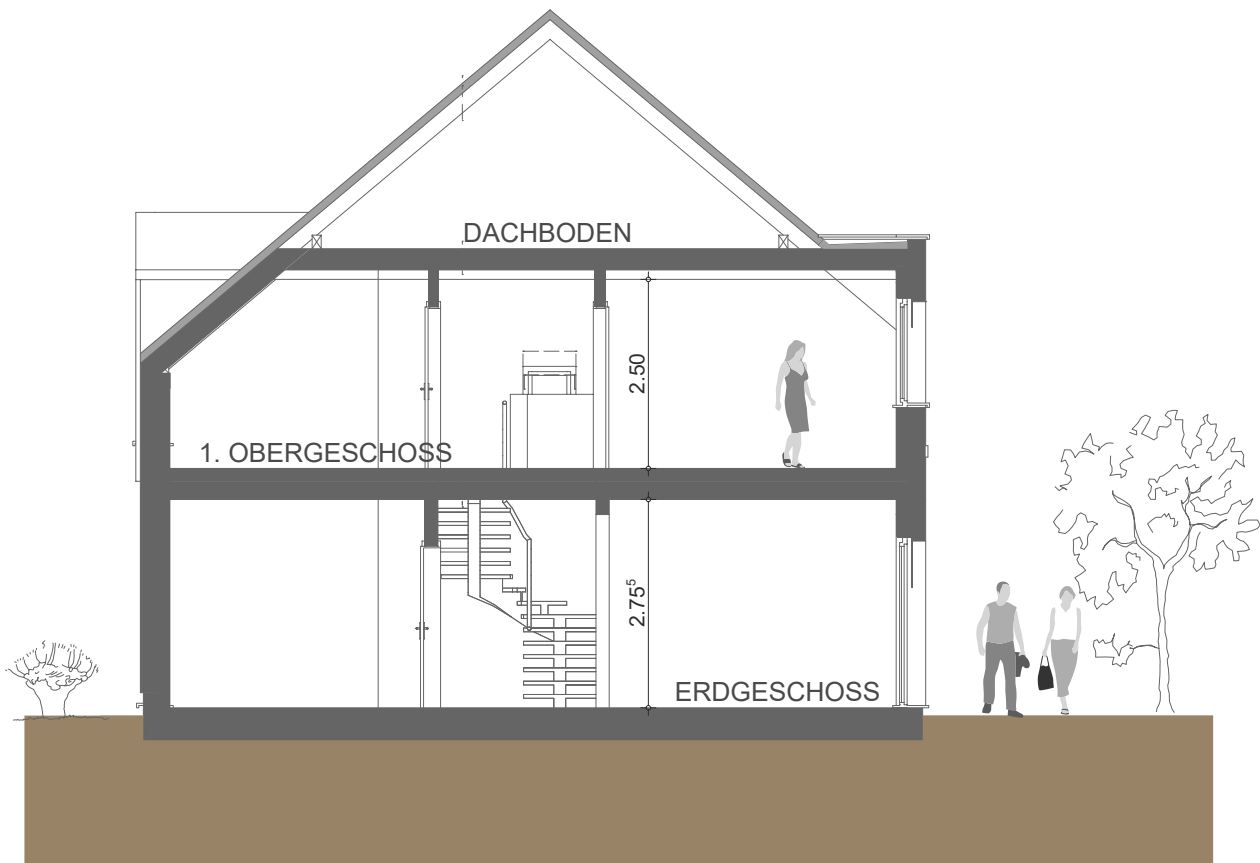


Schnitt A-A

babel
tree
twins

WA5.2

AN DER ALTEN EICHE



Straßenansicht

babel
tree
solo

WA5.2

AN DER ALTEN EICHE

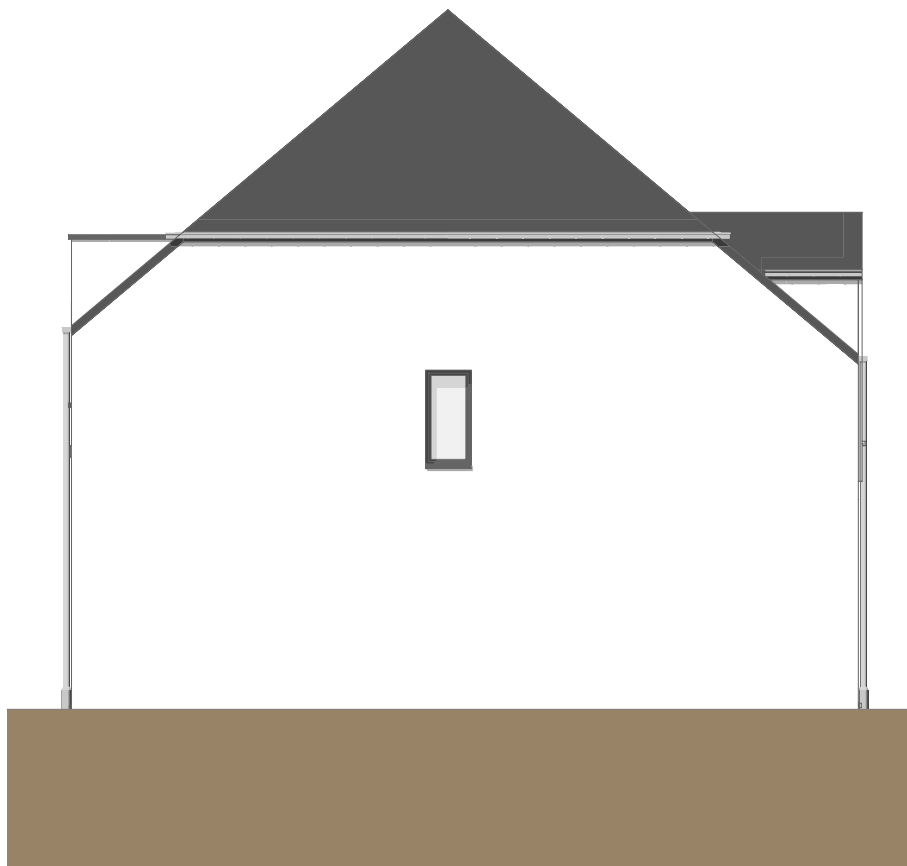


Ansicht links

babel
tree
solo

WA5.2

AN DER ALTEN EICHE



Gartenansicht

babel
tree
solo

WA5.2

AN DER ALTEN EICHE

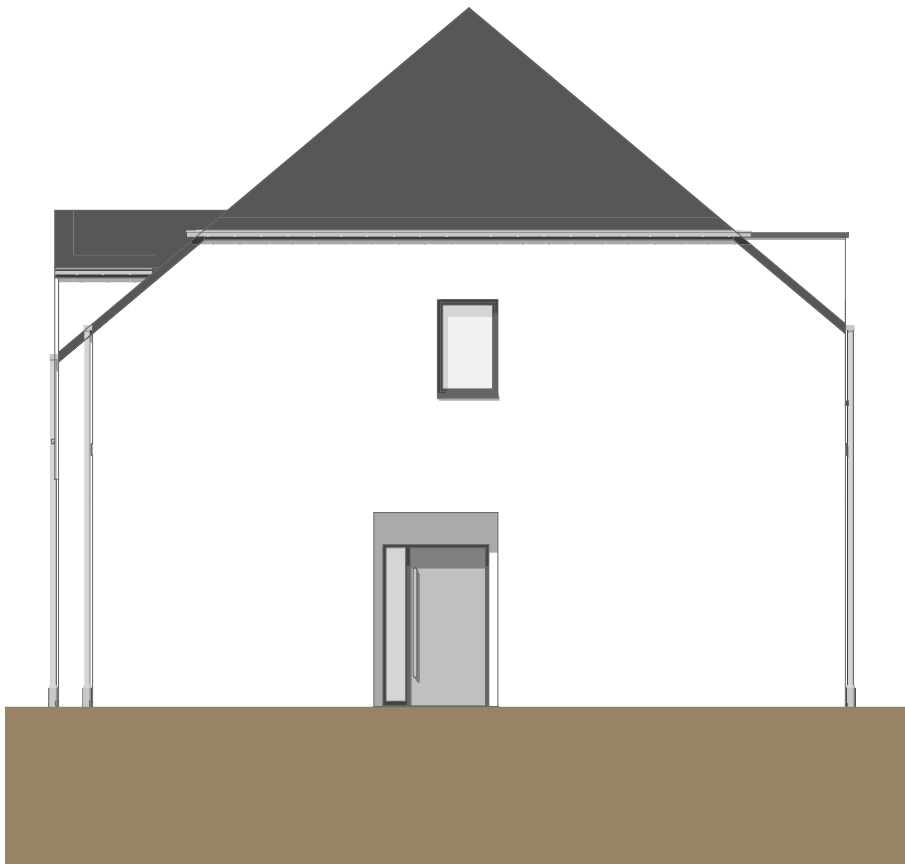


Ansicht rechts

babel
tree
solo

WA5.2

AN DER ALTEN EICHE



Visualisierung

**babel
tree
solo**

WA5.2



AN DER ALTEN EICHE